

**Anti-Kallikrein 3 Antibody**  
**Catalog # ABO11950****Specification**

---

**Anti-Kallikrein 3 Antibody - Product Information**

Application	WB
Primary Accession	<a href="#">P07288</a>
Host	Rabbit
Reactivity	Human, Rat
Clonality	Polyclonal
Format	Lyophilized

**Description**

Rabbit IgG polyclonal antibody for Prostate-specific antigen(KLK3) detection. Tested with WB in Human;Rat.

**Reconstitution**

Add 0.2ml of distilled water will yield a concentration of 500ug/ml.

**Anti-Kallikrein 3 Antibody - Additional Information**

**Gene ID** 354

**Other Names**

Prostate-specific antigen, PSA, 3.4.21.77, Gamma-seminoprotein, Semin, Kallikrein-3, P-30 antigen, Semenogelase, KLK3, APS

**Calculated MW**

28741 MW KDa

**Application Details**

Western blot, 0.1-0.5 µg/ml, Human, Rat<br>

**Subcellular Localization**

Secreted.

**Protein Name**

Prostate-specific antigen

**Contents**

Each vial contains 5mg BSA, 0.9mg NaCl, 0.2mg Na<sub>2</sub>HPO<sub>4</sub>, 0.05mg NaN<sub>3</sub>.

**Immunogen**

E.coli-derived human PSA recombinant protein (Position: I25-P261). Human PSA shares 54% amino acid (aa) sequence identity with rat PSA.

**Purification**

Immunogen affinity purified.

**Cross Reactivity**

No cross reactivity with other proteins

Storage

**At -20°C for one year. After reconstitution, at 4°C for one month. It can also be aliquotted and stored frozen at -20°C for a longer time. Avoid repeated freezing and thawing.**

#### **Sequence Similarities**

Belongs to the peptidase S1 family. Kallikrein subfamily.

### **Anti-Kallikrein 3 Antibody - Protein Information**

**Name** KLK3

**Synonyms** APS

#### **Function**

Hydrolyzes semenogelin-1 thus leading to the liquefaction of the seminal coagulum.

#### **Cellular Location**

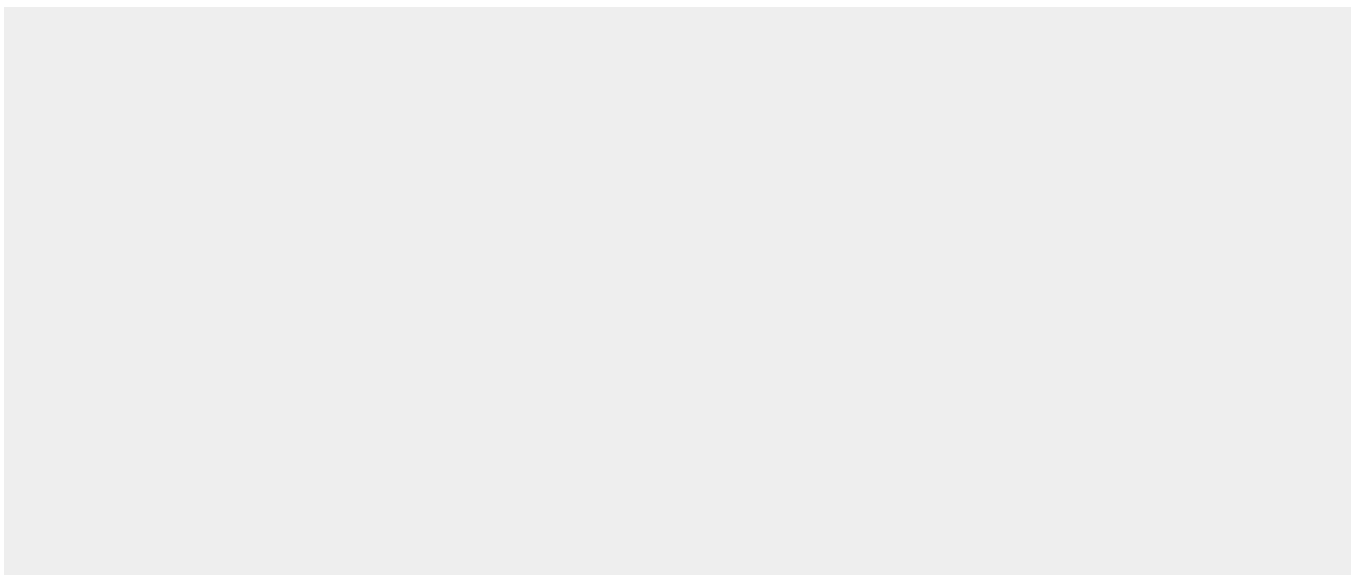
Secreted.

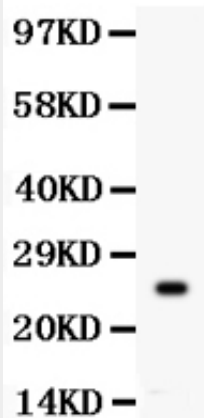
### **Anti-Kallikrein 3 Antibody - Protocols**

Provided below are standard protocols that you may find useful for product applications.

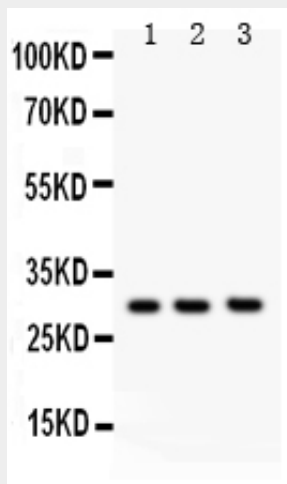
- [Western Blot](#)
- [Blocking Peptides](#)
- [Dot Blot](#)
- [Immunohistochemistry](#)
- [Immunofluorescence](#)
- [Immunoprecipitation](#)
- [Flow Cytometry](#)
- [Cell Culture](#)

### **Anti-Kallikrein 3 Antibody - Images**





Anti- PSA Picoband antibody, ABO11950, Western blotting All lanes: Anti PSA (ABO11950) at 0.5ug/ml WB: Recombinant Human PSA Protein 0.5ng Predicted bind size: 25KD Observed bind size: 25KD



Anti- PSA Picoband antibody, ABO11950, Western blotting All lanes: Anti PSA (ABO11950) at 0.5ug/ml Lane 1: Rat Brain Tissue Lysate at 50ug Lane 2: Rat Kidney Tissue Lysate at 50ug Lane 3: Human Placenta Tissue Lysate at 50ug Predicted bind size: 29KD Observed bind size: 29KD

### **Anti-Kallikrein 3 Antibody - Background**

Prostate-specific antigen (PSA), also known as gamma-seminoprotein or kallikrein-3 (KLK3), is a glycoprotein enzyme encoded in humans by the KLK3 gene. KLK3 is a member of the kallikrein-related peptidase family and is secreted by the epithelial cells of the prostate gland. This gene is mapped to 19q13.33. KLK3 is present in small quantities in the serum of men with healthy prostates, but is often elevated in the presence of prostate cancer or other prostate disorders. KLK3 is produced for the ejaculate where it liquifies the semen in the seminal coagulum and allows sperm to swim freely. It is also believed to be instrumental in dissolving the cervical mucous cap, allowing the entry of sperm. It is not a unique indicator of prostate cancer, but may also detect prostatitis or benign prostatic hyperplasia.